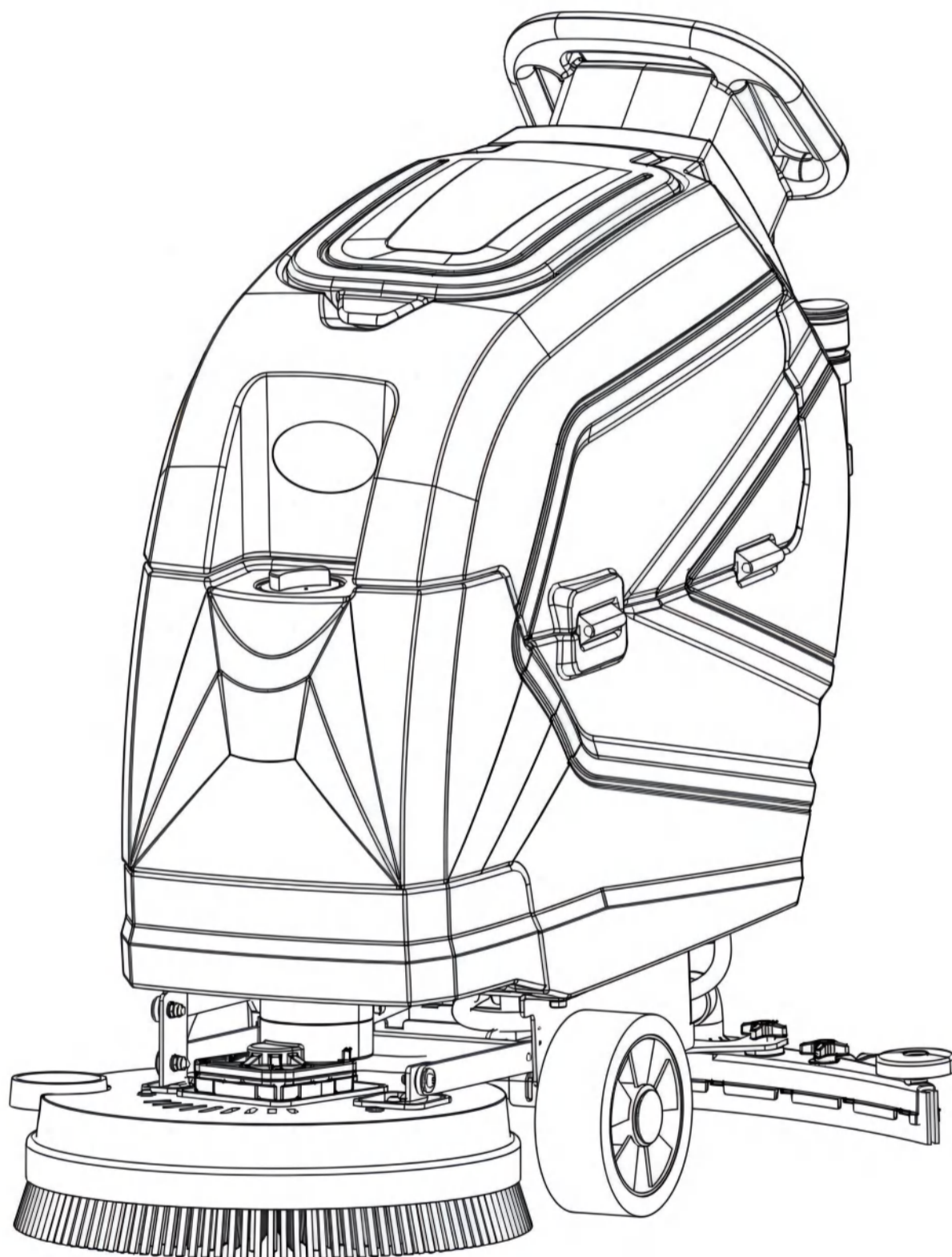


# N3

## WALK-BEHIND FLOOR SCRUBBER

# Parts Manual

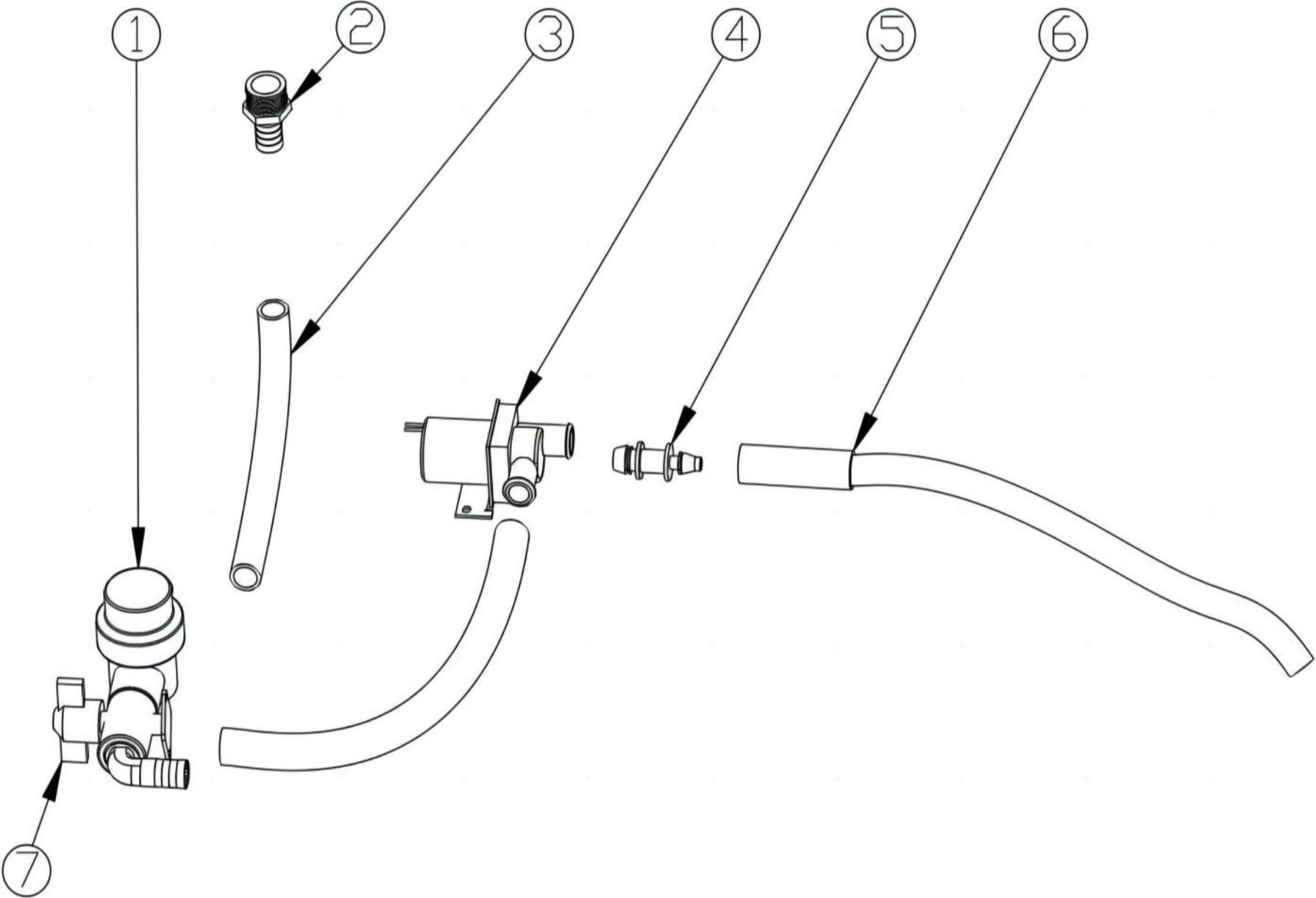


To view, print or download the parts manual,  
visit: [the parts manual, visit:](http://www.pennonenv.com)

[www.pennonenv.com](http://www.pennonenv.com)

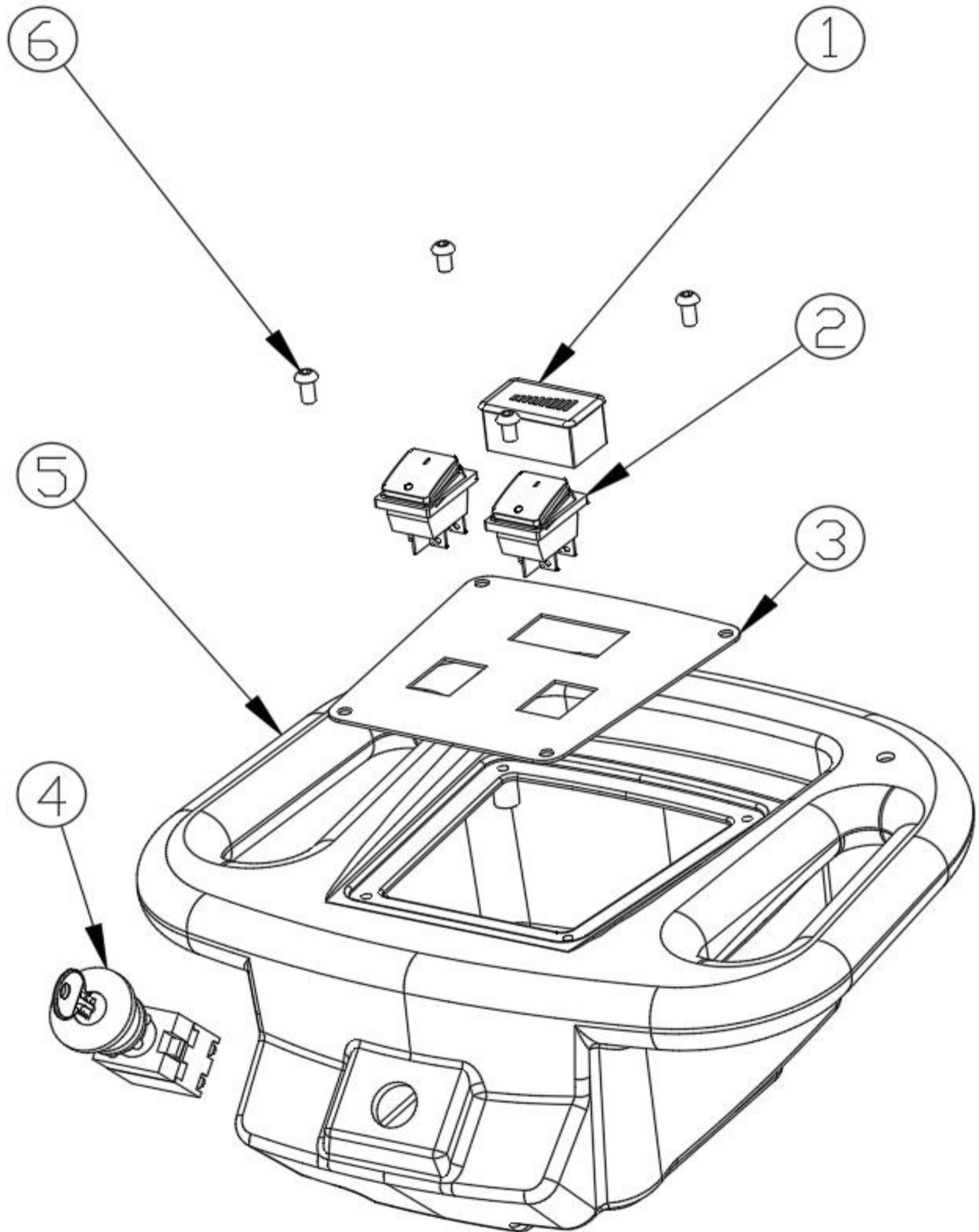
Address: 318 Xinghe Road, Yuyue Town, Deqing County, Huzhou  
City, Zhejiang Province

# Fig.1-HOSE GROUP



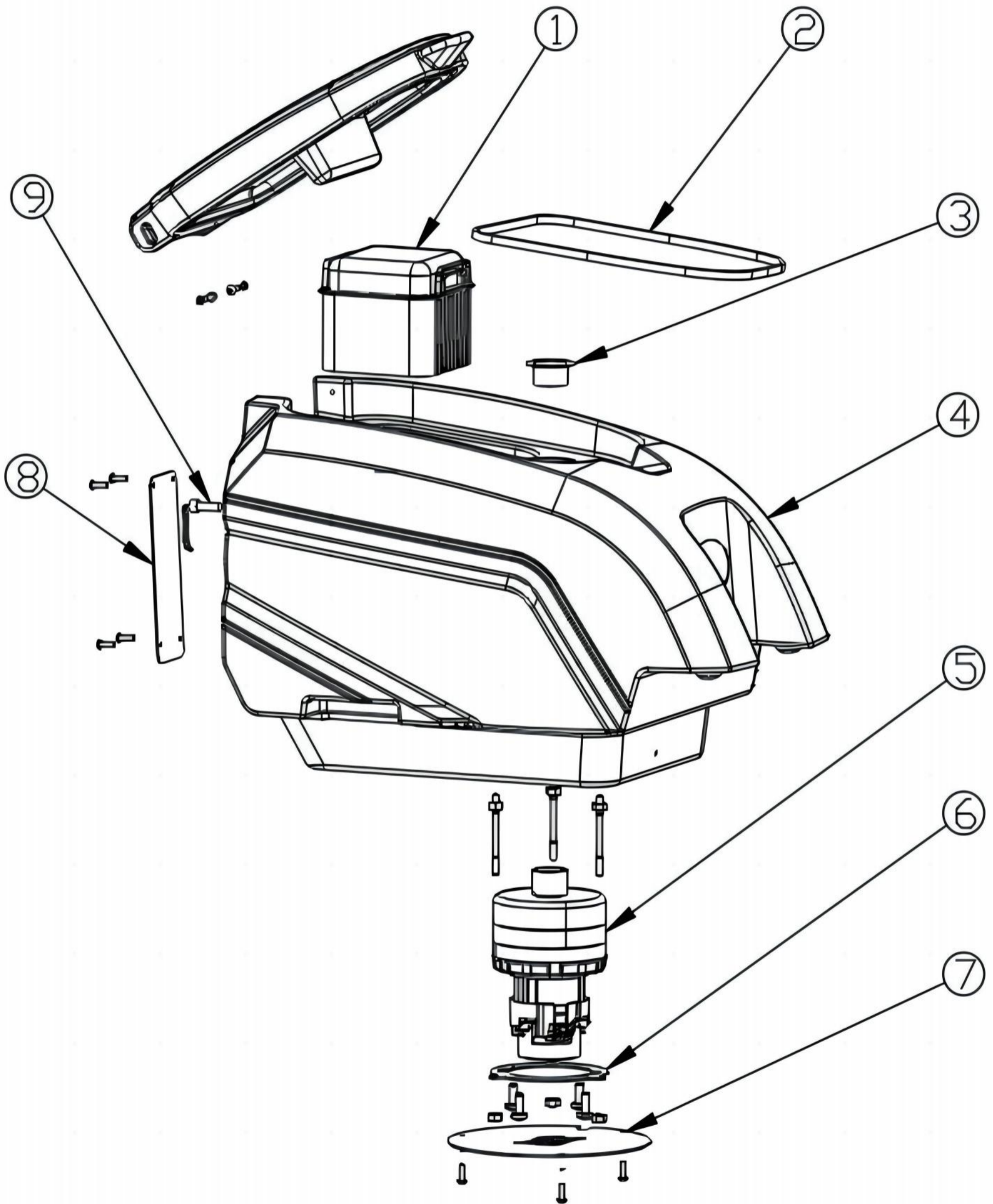
| <b>Ref.</b> | <b>Part No.</b> | <b>Description</b>     |
|-------------|-----------------|------------------------|
| 1           | 0101010032      | Clean Water Filter     |
| 2           | 01020064        | Screws-4*14mm External |
| 3           | 01010002        | Water Pipe             |
| 4           | 0101010031      | Solenoid Valve         |
| 5           | 01020042        | Plastic Connector      |
| 6           | 01010002        | Water Pipe             |
| 7           | 01020046        | Drain Switch           |

# Fig.2-CONTROL PANEL GROUP



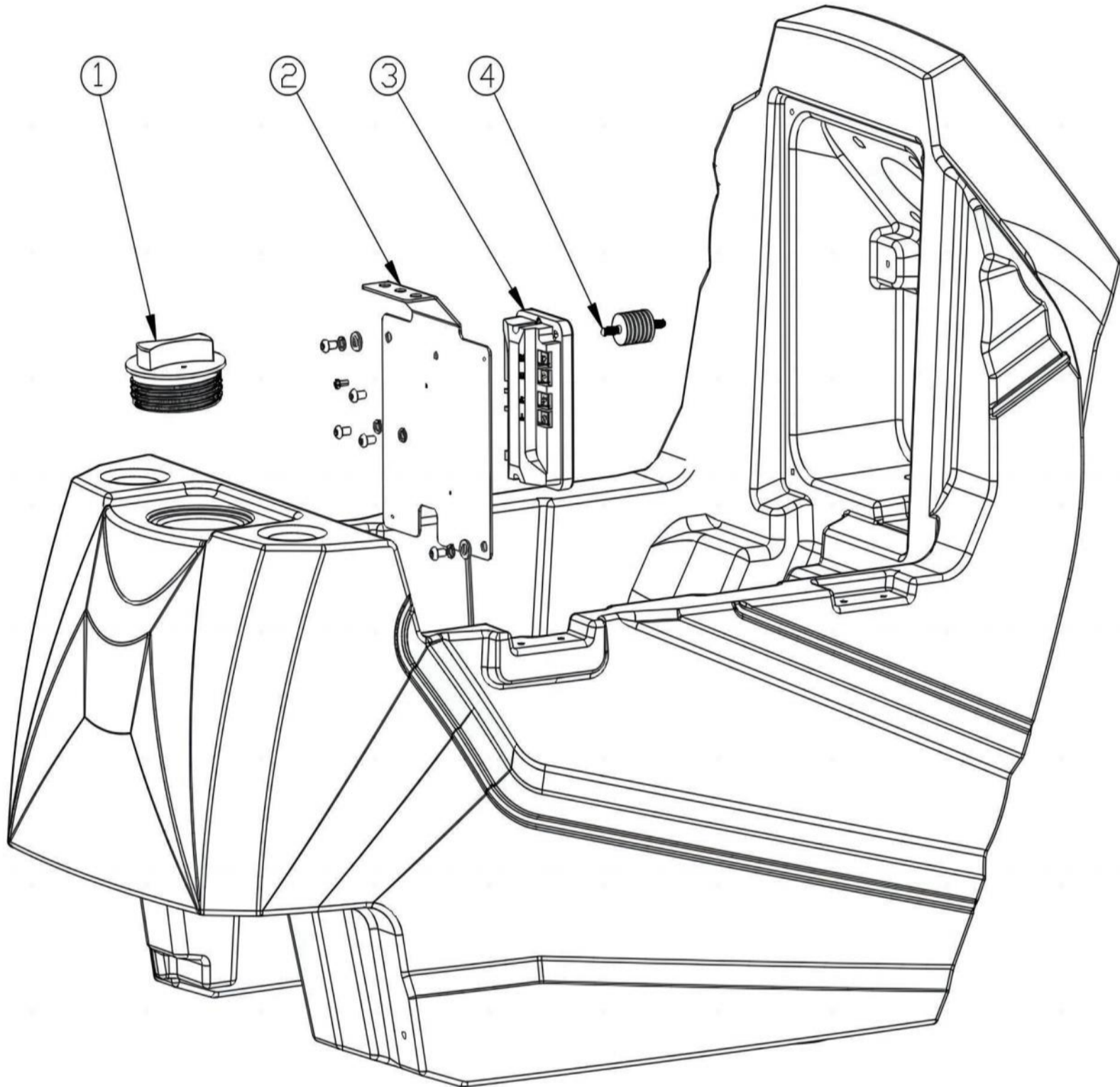
| <b>Ref.</b> | <b>Part No.</b> | <b>Description</b>             |
|-------------|-----------------|--------------------------------|
| 1           | 0101010019      | Power Meter                    |
| 2           | 0101010020      | Rocker Switch                  |
| 3           | 0101010059      | Control Panel                  |
| 4           | 0101010015      | Switch, Safety, Shutoff, W/key |
| 5           | 0101010005      | Handle Housing                 |
| 6           | 01040129        | Internal Countersunk Head 4×12 |

# Fig.3-RECOVERY TANK GROUP



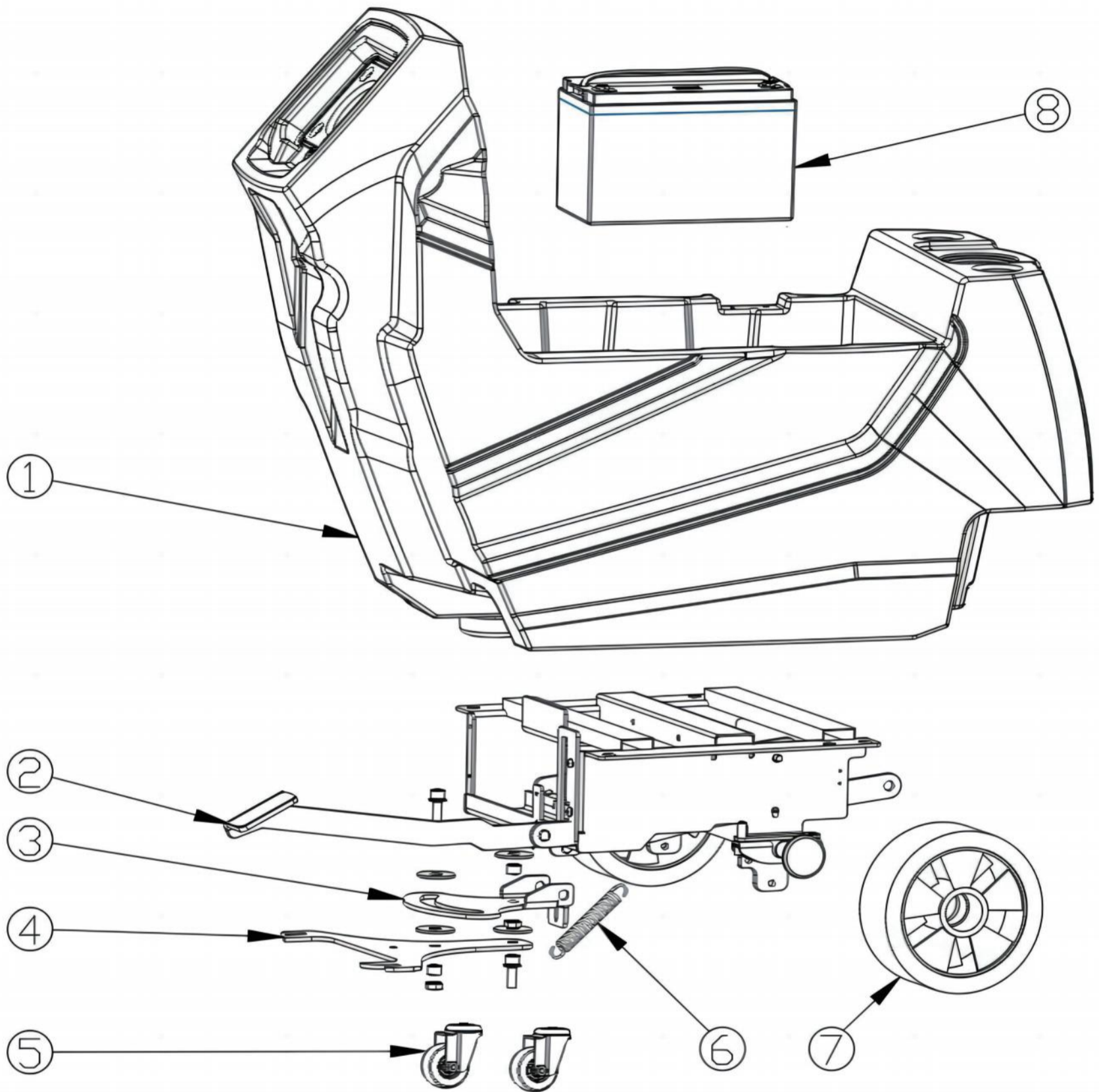
| <b>Ref.</b> | <b>Part No.</b> | <b>Description</b>      |
|-------------|-----------------|-------------------------|
| 1           | 0101010021      | Waste Basket            |
| 2           | 0101010024      | Gasket/Sealing strip    |
| 3           | 01020026        | Small Filter, Motor     |
| 4           | 0101010004      | Recovery Tank           |
| 5           | 0101010053      | Suction Motor           |
| 6           | 0101010059-1    | Sheet Metal             |
| 7           | 0101010059-2    | Sheet Metal-motor cover |
| 8           | 0101010059-3    | Sheet Metal             |
| 9           | 01020034        | Water Level Sensor      |

# Fig.4-SOLUTION TANK GROUP



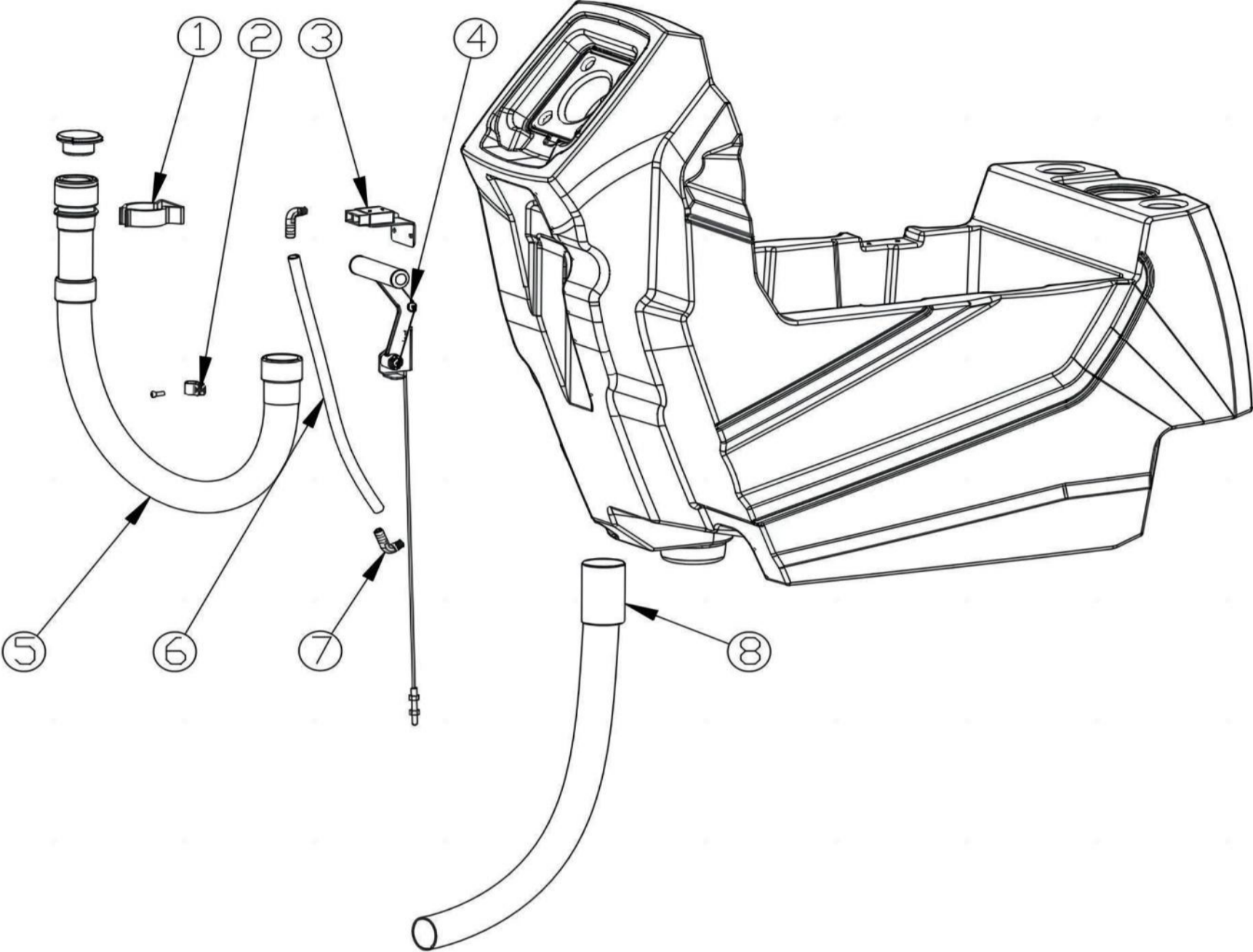
| <b>Ref.</b> | <b>Part No.</b> | <b>Description</b>                      |
|-------------|-----------------|---|
| 1           | 0101010022      | Cover, inlet Water                      |
| 2           | 0101010059-4    | Sheet Metal, Controller Plate           |
| 3           | 0101010054      | Two Way Controller                      |
| 4           | 01020039        | Spare part-Wire pile(insulation column) |

# Fig.5-MAIN FRAME GROUP



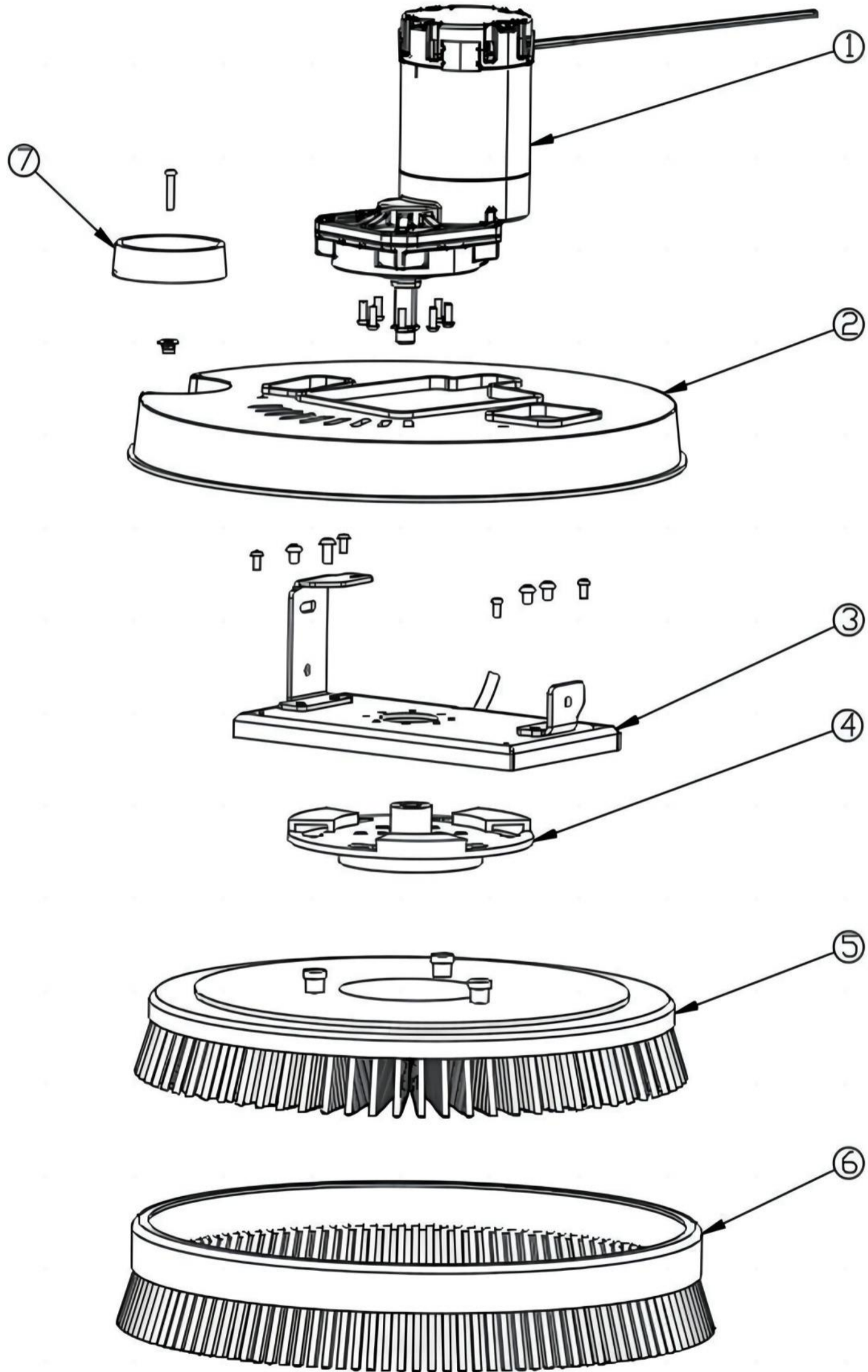
| <b>Ref.</b> | <b>Part No.</b> | <b>Description</b>                      |
|-------------|-----------------|---|
| 1           | 0101010003      | Solution Tank                           |
| 2           | 0101010059-6    | Sheet Metal-Pad, Brush Pedal, Non- Slip |
| 3           | 0101010059-7    | Sheet Metal-Bracket, Lift, Sqge         |
| 4           | 0101010059-8    | Sheet Metal-Plate, Mtg, Sqge            |
| 5           | 0101010027      | Universal Wheel                         |
| 6           | 01020029        | Spring,2*20*98                          |
| 7           | 0101010049      | Wheel                                   |
| 8           | 0101050011      | Battery                                 |

# Fig.6-HOSE GROUP



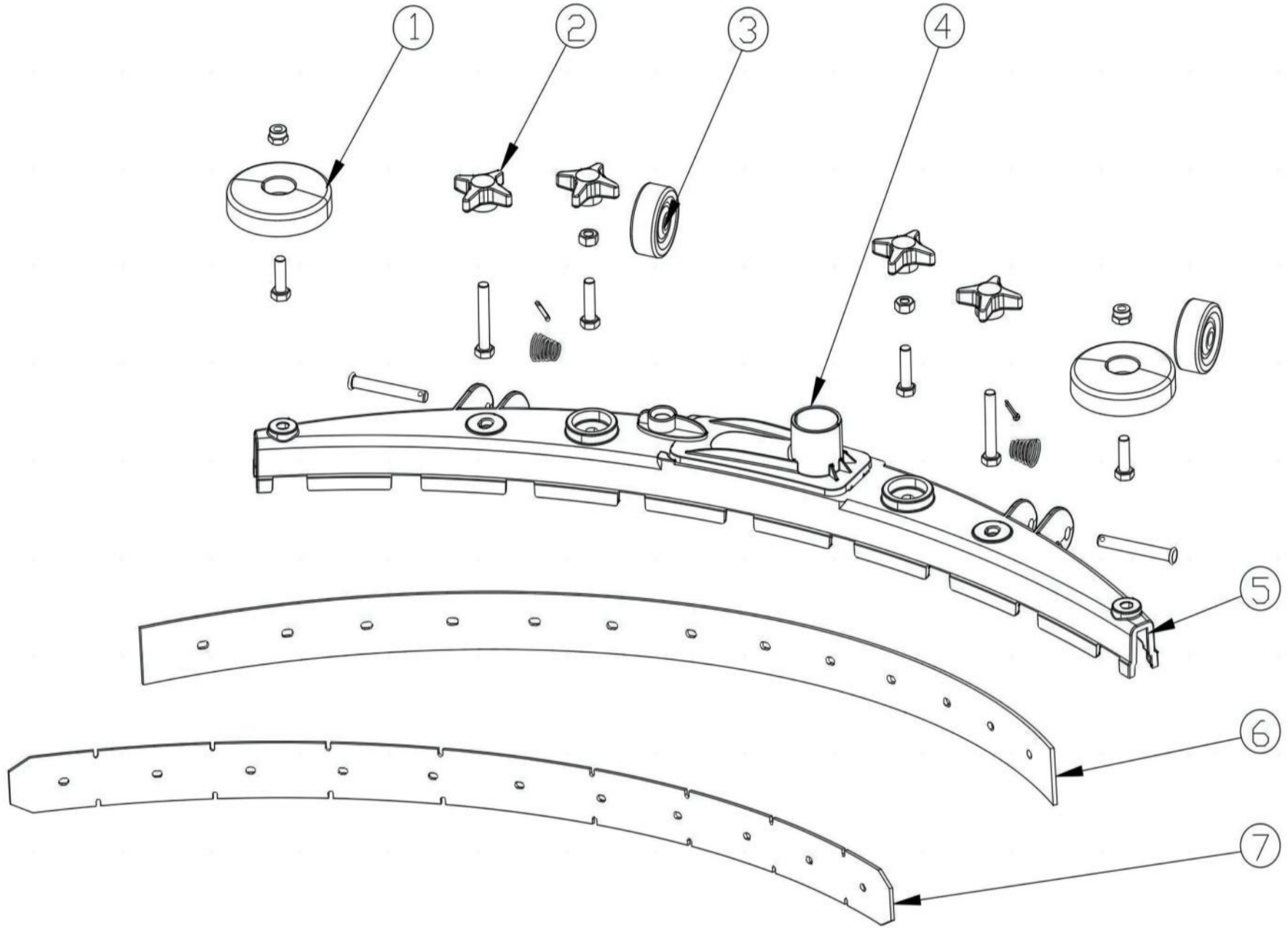
| <b>Ref.</b> | <b>Part No.</b> | <b>Description</b>                    |
|-------------|-----------------|---------------------------------------|
| 1           | 0101010017      | Water Pipe Clip                       |
| 2           | 01020028        | Water Pipe Clamp                      |
| 3           | 01010050        | Red Plug                              |
| 4           | 0101010059-5    | Sheet Metal-Handle, Sqge, Lower, Lift |
| 5           | 0101010012      | Drain Pipe                            |
| 6           | 01010001        | Water Level Tube                      |
| 7           | 01020033        | Screws-1*8mm External                 |
| 8           | 0101010011      | Suction Pipe                          |

# Fig.7-SCRUB HEAD GROUP



| <b>Ref.</b> | <b>Part No.</b> | <b>Description</b>                      |
|-------------|-----------------|---|
| 1           | 0101010036      | Brush Motor                             |
| 2           | 0101010037      | Brush Cover                             |
| 3           | 0101010059-6    | Sheet Metal-Pad, Brush Pedal, Non- Slip |
| 4           | 0101010013      | Flange                                  |
| 5           | 0101090013      | Brush                                   |
| 6           | 0101010025      | Cover,Skirt,Brush                       |
| 7           | 0101010038      | Anti-collision Wheel                    |

# Fig.8-SQUEEGEE GROUP



| <b>Ref.</b> | <b>Part No.</b> | <b>Description</b>   |
|-------------|-----------------|----------------------|
| 1           | 0101010023-W    | Description          |
| 2           | 0101010023-K    | Knob,M8              |
| 3           | 0101010023-2    | Small Wheel          |
| 4           | 0101010016      | Connector            |
| 5           | 0101010023      | Squeegee,Main Part   |
| 6           | 0101010046-F    | Adhesive Strip,Front |
| 7           | 0101010046-R    | Adhesive Strip,Rear  |