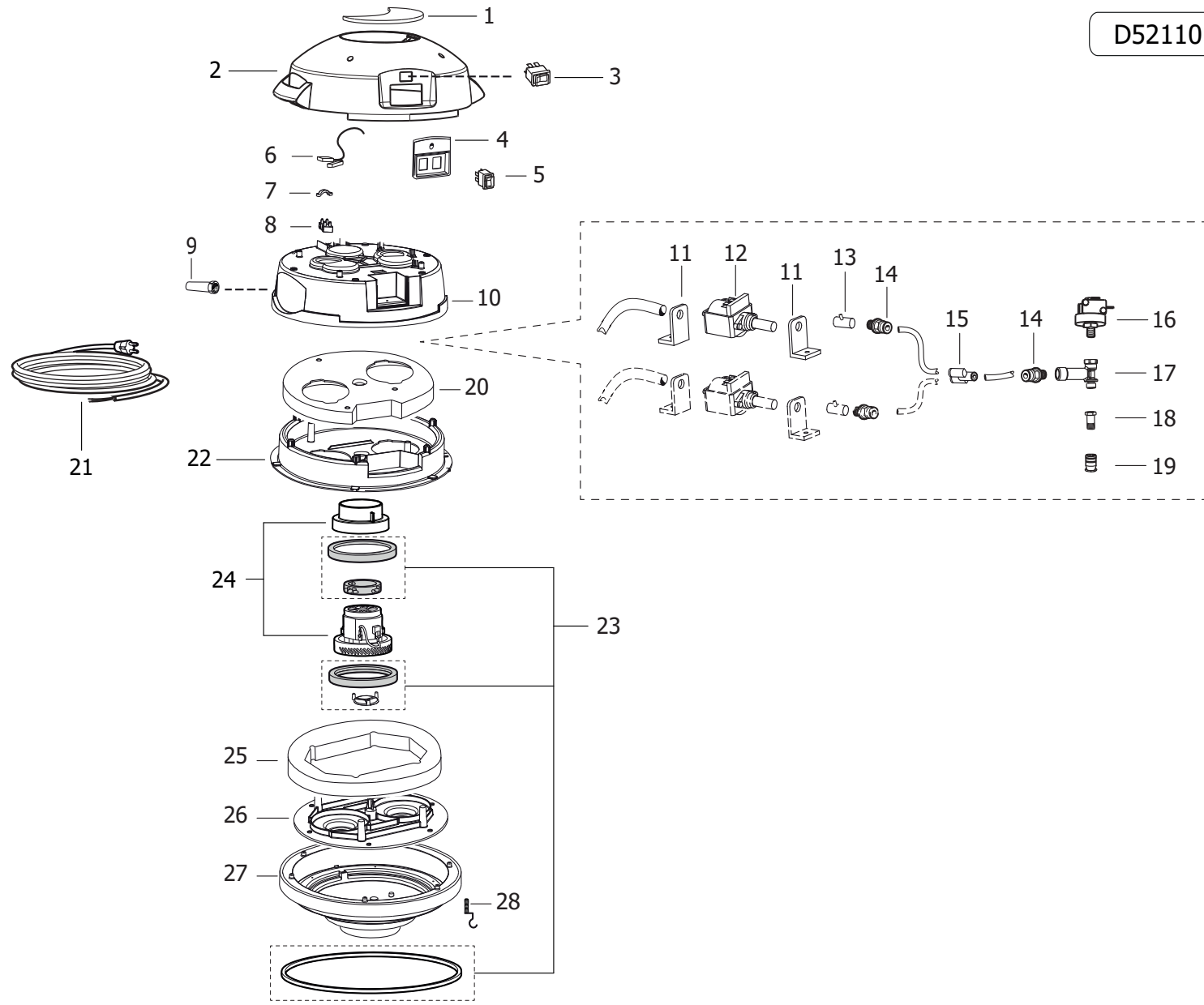


D52110159/01



Pos.	Code	Substituted by	Q.ty	Purchasable	Min. Q.ty	For mainten.	Description
001	4.208.0283		1	Yes	1		GREY HANDLE FOR VACUUM CLEANER '03 RAL.7016
002	4.208.0303		1	Yes	1		GREY HEAD FOR COSTELLATION RAL.7016
003	5.009.0293		1	Yes	1	EXT	RED BACKLIGHTED SWITCH WITH PR OTECTOR
004	4.208.0242		1	Yes	1		BLACK SWITCH HOLDER WITH HOLE
005	5.009.0538		2	Yes	1	EXT	SWITCH ASSY + PROTECTION COVER 14 (14)
006	4.212.0059		1	Yes	1		BLUE WIRING CABLE FOR COSTELLATION
007	4.008.0277		1	Yes	1		CABLE HOOK
008	3.405.0055		1	Yes	1		JUNCTION-BOX 4MMQ. 110 12 380V
009	3.406.0031		1	Yes	1		CABLE HOLDER 60X12X15.5 EPDM BLACK
010	4.208.0401		1	Yes	1		UNDER COVER
011	4.208.0313		4	Yes	1		L ANTIVIBRATION DEVICE FOR PUMP
012	3.752.0309		2	Yes	1		PUMP ULKA 52W EF7 120/60
013	3.106.0009		2	Yes	1		GREEN DEAERATOR
014	3.100.0134		2	Yes	1		CONNECTION D.6X1/8" M
015	3.100.0135		1	Yes	1		Y CONNECTIO FOR HOSE O.6
016	3.403.0081		1	Yes	1		PRESSURE SWITCH
017	4.006.0254		1	Yes	1		BY-PASS DIESEL VALVE
018	4.206.0002		1	Yes	1		BRASS COUPLING
019	3.752.0216		1	Yes	1		CONNECTION 1/4F
020	4.215.0097		1	Yes	1		SPONGE HLC 24 AU SP.60 D.340mm
021	4.012.0389		1	Yes	1		2X12AWG SJTW-A CABLE L=10MT
022	4.208.0244		1	Yes	1		UPPER SEPARATOR BETWEEN MOTORS
023	6.205.0113		2	Yes	1		KIT MOTORE A SPAZZOLA BISTADIO 120 /60 BY-PASS X ASPIRATORI
024	6.205.0070		1	Yes	1	EXT	GASKET KIT + VALVE (TAURUS/DOM US/COSTELLATION)
025	4.215.0126		1	Yes	1		SPONGE mm80x25x1250 PPI 60 -AU-
026	4.208.0087		1	Yes	1		LOWER SPACER VACUUM CLEANER PROF.'03-2 MOTORS
027	4.208.0293		1	Yes	1		GREY MOTOR BASE FOR PROF.VACUUM CLEANER'03 RAL.7016
028	5.213.0001		1	Yes	1		ANTISTATIC PLATE

ASS.TESTATA SOLARIS/COSTELL. 2 MOTORI -GR.SC.-(RAL.7016) S/SPINA 120V - Content filters: validity 28/04/2022



R52110159 - ASS.TESTATA SOLARIS/COSTELL. 2 MOTORI -GR.SC.-(RAL.7016) S/SPINA 120V

Validity: from 29/06/2020 to 31/12/9999

28/04/2022

Page 2 / 2